

December
2022

Volume 71 Issue 12
December 4, 2022

wesleymonumental.org

THE MONUMENTAL MESSENGER



Life at Wesley



Youth singing in worship



2nd Grade Bible Presentation & Luncheon



Eli's Place children showing off their costumes during the annual costume parade.





From Ben's Desk

Ben Martin, Senior Pastor

912-232-0191, Ext. 216, ben@wesleymonumental.org



In many ways December arrives with Christmas already here. Christmas carols are on every radio station, Christmas movies on television, Christmas decorations all around, and Christmas sales in every store. Even churches are singing Christmas carols as soon as Thanksgiving is over. The victim of this premature Christmas is the season of Advent. Ironically, it is the season of waiting, preparation, and expectation. In a world where we have come to expect everything now, waiting is no longer a virtue to be cultivated, but rather a flaw to be corrected.

Maybe no season of the Christian year is a more important rebellion against the culture than Advent. It calls us impatient people to be patient. Just think how patience would change the world we live in. What if we were more patient with each other, more patient with change, more patient with ourselves, more patient with college kids playing football for crying out loud? Advent calls us to live with faith and hope, and Lord only knows we could use some more faith and hope. But, for the most part we don't want faith and hope, we want surety. Faith and hope call us to relinquish control, to trust in someone we can't see. We might think of faith and hope as the fuel for patience.

Advent turns our eyes towards Jesus who promised he would come again, and surely we need to keep our eyes on Jesus, the source of our faith and hope. Remember the words of that little gospel chorus, "Turn your eyes upon Jesus, look full in His wonderful face, and the things of earth will grow strangely dim in the light of His glory in grace."

Christmas is wonderful, but it is even better when we've had Advent. A little patience, anticipation, faith and hope, make Christmas a true celebration not an afterthought. So make sure you carve out time to worship at Wesley during the season of Advent, otherwise you may be tired of Christmas before it actually gets here.



Christmas Eve Communion Services

Saturday, December 24

- 10:30 a.m. Worship Service
- 3:30 p.m. Child-Oriented Service
(enjoyed by all ages)
- 5:30 p.m. Worship Service

Christmas Day Service

Sunday, December 25

- 11:00 a.m. Worship Service
- No 8:45 Worship Service or
Sunday School



Congregational Life

Jennifer Thompson, Congregational Care

912-232-0191, Ext. 202, jennifert@wesleymonumental.org



Christmas Favorites with Claire Frazier and Bobby Hanson

It's beginning to look.....or sound.....a lot like Christmas! On Monday, December 12 at 11:00 a.m., our own Claire Frazier and her friend, professional harmonica player, Bobby Hanson (along as an accompanist on the piano) will entertain us with a selection of Christmas Favorites in the sanctuary. A festive lunch prepared by Suzanna will follow at noon in the Fellowship Hall. Please call the church office or contact Jennifer Thompson by Friday, December 9 to make your reservation.



Children's Ministry

Charli Weeks, Director of Children's Ministry
912-232-0191 Ext. 225, charli@wesleymonumental.org



Lots of exciting events are happening in December. Read below for details!



Christmas Ornament Painting

On Sunday, November 27, we'll be painting pottery ornaments in room 202 immediately following the 11:00 service. These ornaments can be hand-painted by your child and then they are glazed and fired by professionals. Ornaments are \$12 each and come with a ribbon for hanging. No need to make a reservation. The ornaments will be ready for pick up on December 18.

Christmas Fun Day for Babies, Toddlers and Preschoolers

On Saturday, December 10, the nursery will be open from 9:00 a.m. until 4:00 p.m. for Christmas Fun Day! We enjoy having the children come and spend the day with us, and we hope all their parents have some time to enjoy the Christmas season. We are providing lunch and plan to eat around noon. We'll make ornaments, bake cookies, play on the playground, and watch a Christmas movie. It is fine for the children to come for the whole day or for any part of the day. To register, send an email to charli@wesleymonumental.org with the time they will be arriving on the 10th.



Christmas Presentations

Mark your calendar and plan to join us for our children's Christmas presentations. This year the Nativity Pageant will be presented in the sanctuary following Wednesday Night Supper on December 14 at 6:15 p.m. The Joyful Noise Choir children will present their Christmas Celebration Program, Sunday, December 11 at 5:00 p.m. in the Sanctuary.



Christmas Eve Family Service

This year our Family Service will take place at 3:30 p.m. on Christmas Eve. During this service the children bring in the pieces to our nativity scene. If your child would like to participate in this service, please send an email to charli@wesleymonumental.org.



Joyful Noise Choir led worship on Sunday, November 13.



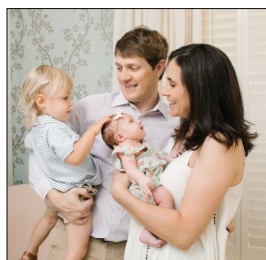


Evangelism

Nelle Bordeaux, Outreach & New Members
912-234-9245, tbordeaux@prodigy.net

Welcome, New Members!

We are thankful the following joined the church during October. Our December New Member Course will be at 10:00 a.m. December 4 and 18, with the class joining as a group on December 18. Nursery provided. Please call the church office to sign up, 912-232-0191.



Elizabeth and Benjamin Cobb and children, Banks and Elizabeth "Elle" Cobb

Elizabeth and Benjamin moved here from Huntsville, AL, and the church preschool, Eli's Place, drew them to the church. Their son, Banks, age 2, and daughter, Elle, age 4 months, love the preschool. The Cobbs and their Shepherd, Marcia Thompson, all live on Gaston Street.

Shepherd: Marcia Thompson



Julia Flowers

Julia is a college student at Georgia Southern's Armstrong campus, with a double major in biochemistry and business. Her parents are her Shepherds. Julia is the Music Assistant, helping Dr. Monica Dekle, and she also is in the Chancel Choir.

Shepherds: Janet and Jimmy Flowers



Kelly and Jonatan Gonzalea and sons, Jonatan and Sam

The Trombone Choir, led by Mark Spradley, that practices and plays at the church drew the Gonzalez family, as their elder son participated. He is now a Georgia Tech freshman, and Sam is a 12-year-old Richmond Hill Middle School student. Kelly and Jonatan met in Bristol, TN at college, when Jonatan came to the U.S. from his native Caracas, Venezuela, where his father served as a Presbyterian minister. Kelly is from Tennessee.

Shepherds: Caroline and Todd Livingood; Jonatan's and Sam's Shepherds, Sara and Anna Livingood



Beth Kaufman

Beth moved to Savannah from Texas to be near her daughter, Caroline Freeman. Beth is a pharmacist. Already she is in the Chancel Choir. She loves the traditional worship and great sacred music of Wesley.

Shepherds: Deanne and Ken Rimes



Shayna Stancil-Wier

Just one month prior to joining, Shayna married Allen in Wesley's sanctuary in September. She is from Chattanooga, TN. Allen's parents and grandparents were Wesley members,

and the Wesley Gardens gazebo is dedicated in his mother's memory. Shayna has already helped in Missions at People of Action Caring for Kids (PACK) and at church with sacking groceries for Old Savannah City Mission.

Shepherd: Allen Wier, Jr.



Anne Tyree

Anne grew up in Virginia, and she is a banker. She has helped Wesley's construction ministry by painting a church during Youth Local Mission Week and by assembling furniture for Family Promise. One of her sisters is an Episcopal minister. The traditional worship drew Anne to Wesley and a sense of being "at home."

Shepherd: Kimberly Ergul

Join a Bible Study!

♦ Young Mothers' Bible Study

Tuesdays, 9:00 a.m.-10:00 a.m., Bible Buddies nursery provided. Topic, Gardens in the Bible, sign up with Nelle, tbordeaux@prodigy.net.

♦ Thursday Noon Bible Study

Thursdays, noon to 12:30 p.m., via Zoom. Topic is the book of Revelation. Sign up with Nelle, tbordeaux@prodigy.net.





Missions

Nelle Bordeaux, Outreach & New Members
912-234-9245, tbordeaux@prodigy.net



Family Mission Project - Urban Hope Christmas Supper

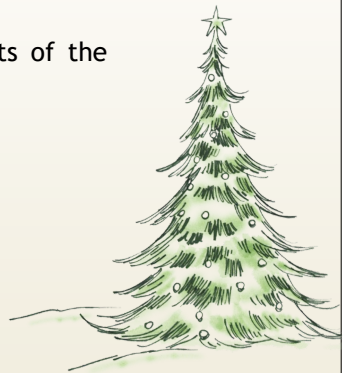
On Monday, December 12, please meet at Independent Presbyterian Church, Bull at Oglethorpe, at 5:30 p.m.; the bus will arrive at 6:00 p.m. with the Urban Hope children. Please cook at home a dish to serve the children and their families (needed are ham, sweet potatoes, green beans, salad, fruit, rolls, punch, cookies, paper plates and napkins and cups, and plastic cutlery). Please sign up in advance with Nelle, tbordeaux@prodigy.net. All ages are welcome!

A Monumental Christmas ~ The Market of Christmas Gifts in Service to Others

As our 2022 Christmas offering, you will have an opportunity to give alternative gifts to family and friends. An "alternative gift" is a donation you make to one of the ministries with whom Wesley partners. You purchase a gift through a donation. The gift will fund specific items or programming. You give the gift in honor of someone for whom you would buy a gift. The church directs your donation to the organization that sponsors the gift you've chosen. Then we supply a beautiful card and box with a description of your special gift for you to give the recipient.

Gifts ranging between \$25 and \$250 will support the programming and clients of the many missional agencies Wesley supports throughout the year. These include:

- Family Promise of the Coastal Empire
- Fresh Air Home
- House of Hope Refuge of Love
- Inspiritus
- Mission on the Move
- People of Action Caring for Kids (P.A.C.K.)
- Team Savannah 4 Veterans
- The Living Vine
- ThriVe Express Savannah
- Urban Hope
- Wesley Community Center



The Christmas market catalog will be shared with the community in the coming week across Wesley's communication platforms.



Mission On The Move in Honduras

Your church provides dental care, homes for children, and an education for children in Honduras and Mexico. In partnership with Wesley Monumental UMC, Mission On The Move in Santa Elena, Honduras continues to support children and families in the after school program for 75 children. This program provides all school supplies, uniforms, and fees and hot, balanced meals while sharing the love of Christ through intentional discipleship. Mission On The Move, in partnership with Wesley, provides an extension of this program for special needs children where we provide support for parents of children who are autistic, deaf, or who need speech therapy or physical therapy. We currently serve nine children in this program. Check out the video at this link - <https://youtu.be/yu5Mrvr3Ey8>

For more information about all of our ministries in Honduras, check out our video called What is Mission On The Move Honduras? - <https://youtu.be/JtYkOAoilUU> or view our website, missiononthemove.org.

We look forward to hosting a Mission team from Wesley Monumental February 17-24, 2023. Please consider joining our ministry in person by contacting Pat and Sharlene Monahan.

~ Yours in Christ, Ernie & Allison Sizemore, Donna Zipperer



Wesley Gardens Retreat

Micah Sprunger, Retreat Director
912-441-7578, micah@wesleygardensretreat.com

Bible Study: Tuesday, December 8

Join us for the spiritual discipline of Bible study. An in-depth class presented by Bible scholar and ESV commentator Dr. Scott Hafemann. This fall we will be looking closely at “Peter, the Preacher” by examining his speeches in the book of Acts. Join us Tuesday, December 8 from 6:30 p.m.-8:00 p.m. in the Main House. Contact hello@wesleygardensretreat.com for details.



Spiritual Direction

Christian Swails is available on site at Wesley Gardens Retreat for one-on-one Spiritual Direction. A Spiritual Director is someone trained in holy listening and spiritual companionship, helping others name and notice the presence of God in their lives. Christian is passionate about making this ancient practice available in the Lowcountry. Learn more about Christian and Spiritual Direction by visiting his new website, www.christianswails.com.

Commemorative Live Oaks & Benches

Looking to make a lasting contribution to Wesley Gardens Retreat or honor a special person or occasion?

Memorial live oak trees and teak benches along with custom plaques and engravings are available.

All donations are tax deductible.

For details, please email, micah@wesleygardensretreat.com



Prayer

“Behold, I am coming soon! Blessed is he who keeps the words of the prophecy in this book.” - Revelation 21:7



Christmas is a joyful celebration of Jesus’ birth. The first time Jesus came into the world, He came as a baby. He was born in a barn with sheep and hay all around. The second time Jesus comes will be in a whole different way. The Bible tells us to look forward to His second coming. At Christmas time, it is exciting to believe and celebrate the first time and look forward with anticipation to the second time!

We, the Prayer Committee, invite you to pray with your church family Wednesdays from 4:45 p.m. - 5:15 p.m. in the Oliver Hall Parlor. -Sue Ellis, Prayer Committee Chair



Poinsettias



Poinsettia Orders

Poinsettias will be placed in the Sanctuary on Friday, December 16 and may be taken home following the last Christmas Eve service.

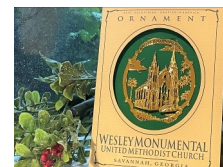
Please place your orders for plants in memory or in honor of loved ones by Sunday, December 11. Order forms may be found at all sanctuary entrances or you can order and pay online by visiting bit.ly/WMPoinsettias



Church Bookstore

Gift Ideas - Available in the Church Office

Wooden Sheila’s Collectibles (benefits Mission Committee)
Wesley Monumental Church (\$30)
John Wesley Statue (\$15)
Wesley Monumental Christmas ornament (\$11)
(benefits Capital Campaign Fund)





Music

Monica Dekle, Director of Music & Organist
912-232-0191 Ext. 213, monica@wesleymonumental.org



1st - 12th graders singing in worship on October 23



Memorials

December 2022

Gifts have been received in Memory or Honor of:

The Endowment Fund

In memory of
Phil Truluck
From Sally & Archie Davis

In memory of
Cecil Abarr
From
Annelle McDuffee
Lynne & Fred Bozeman
Jim & Karen Pannell
Gloria Eitel
Archie & Sally Davis
Raymond Cartledge
Jim & Dianne Siskin
J.C. Lewis Ford
Dan & Judy Bradley

The Wesley Gardens Endowment Fund

In memory of
Cecil Abarr
From Henry & Debbie Whitfield

The Pastors Discretionary Fund

In memory of
Cecil Abarr
From
Joanne & Will Faulk

Monumental Music

In memory of
Craig Hanson
Joe Ryan
Montyne Medders
From
Ken & Deanne Rimes

In memory of
Cecil Abarr
Joe Ryan
From
Dot and Penny Harper

The Music Endowment Fund

In memory of
Joe Ryan
Montyne Medders
From
Wesley Chancel Choir

The Music Endowment Fund Cont.

In memory of **Ellene Anderson**
From
Martha & Joe Mathews
Debra Ellis
Lynn & Fred Bozeman
Carl Pedigo & Kathy Horne
Bonnie & Henry Anderson
Gloria Eitel
Joanne & Will Faulk
Chuck & Ann Seyle

In memory of **Craig Hanson**
From
Wesley Chancel Choir
Anna & Clegg Ivey
Andrew & Monica Dekle
Cindy & John Burton
Ken & Deanne Rimes
Marcia Lantero

In memory of **Phil Truluck**
From Jim & Karen Pannell

In memory of **Nancy Beckwith**
From The Beckwiths



Messenger Monthly Spotlight



**Fall Festival at
Wesley Gardens Retreat**

