



## Membership

Nelle Bordeaux, Outreach & New Members  
912-234-9245, tbordeaux@prodigy.net

### Welcome, New Members!

Our first-ever online New Member Course was held April 19 and 26. Its participants will join once we resume worship in the sanctuary. Our next New Member Course will be June 7 and 14 online via Zoom. Please sign up with Nelle, 912-234-9245 or [tbordeaux@prodigy.net](mailto:tbordeaux@prodigy.net).



### Emily Barger

Emily is a native of Louisville, Georgia, and an alumna of Georgia Southern. She founded Mamie Ruth, a locally manufactured women's clothing line sold at Belk and in her three store locations. She named her company for her grandmother, who lives in Louisville. Already she is paired with a senior adult to write letters during the quarantine.  
*Shepherd: Margaret Stanley*



### Lauren Blanco

Lauren grew up in Hinesville. When she walked into Wesley, it felt like home. She is a full-time personal trainer and likes rescue dogs. She looks forward to working with the youth fellowship. She also is already paired with a senior adult to write her notes during the quarantine. Lauren is also a Georgia Southern alumna.  
*Shepherds: Brooke Ann and Jason Childers, Lily Floyd, Victoria and Alexander Childers*



### Jackson Regen

Jackson is from Nashville, Tennessee, and he is a horse trainer working with children and adults. His shepherds invited him to Wednesday night supper and to church. Jackson liked how welcoming and friendly the Ellises are.  
*Shepherds: Sue and Dr. Keith Ellis*



### Do You Want to "Adopt" a Senior Adult or to Be Adopted?

Please let Nelle know if you want to "adopt" a senior adult to send occasional notes and to call every 2-3 days during the isolation. If you want to be adopted and are a senior adult, please tell Jennifer Thompson. What an exciting two-way ministry! We don't want to miss anyone who wants to participate. Children and youth are welcome, too, and are encouraged to send crayon art and letters to their "adopted" senior adult.

### Tithe Your Time

Please send Nelle your ideas on how you are "tithing your time" during the isolation. We are thankful for the 36 young members paired with 36 senior adults for a meaningful two-way ministry of notes, phone calls, and even art by children and adults.



## Music

Monica Dekle, Director of Music & Organist  
912-232-0191 Ext. 213, [monica@wesleymonumental.org](mailto:monica@wesleymonumental.org)

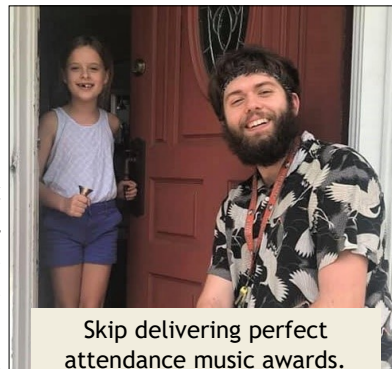
Thank you to all the church staff as well as Shirley Roberts, Ray McClain, Raymond Patricio, Angelina Stack, and Nancy Goodman for helping the music ministry during my 46-day hospital stay followed by my son's extended hospital stay. Also, Andrew and I thank the entire congregation for their loving support and prayers. We could not have made it through this difficult time without you.

Over 50 children in the Royal School of Church Music earned awards this year. We are so proud of all the children and their dedication to making music to our Lord. Since we were unable to have the ceremony, all the children were mailed their awards!

Skip Watts and Sheila Boone spent a day hand-delivering perfect attendance music awards to 22 children who had earned them for attending every Wednesday evening rehearsal throughout the year.

I look forward to seeing everyone again very soon. Until then, keep singing!

*Because He lives, I can face tomorrow, Because He lives, all fear is gone;  
Because I know He holds the future, And life is worth the living, Just because He lives!*



Skip delivering perfect attendance music awards.



## Missions

Nelle Bordeaux, Outreach & New Members  
912-234-9245, tbordeaux@prodigy.net

## Serving in a Time of Pandemic



The needs of our wider community have multiplied dramatically in the past couple of months, and Wesley Monumental is working to be the hands and heart of Christ in this time. Through the work of our Missions Committee, we are working together while apart.

### ⇒ Direct Support to Families

With Urban Hope, Wesley Community Center, Living Vine, Fresh Air Home, and Inspiratus Refugee Ministry, members of the missions committee are in conversation with these annually funded ministries to establish partnerships that direct support to families in the most critical need.

### ⇒ Feeding Refugee Children

Church members have donated Kroger gift cards to feed refugee children and their parents. Many of these families had previously had free breakfasts and lunches at public schools for their children, but now they need to cook three meals a day at home. You have fed a family with nine children, and you have fed a family with one child. Your deliveries of food have kept children safe and healthy. For example, one mother in one of our refugee families said upon receiving aid from Wesley, "Thank you very much. You don't know how happy I was when I received the money. My husband not work. My little girl needed milk and diapers. Last week she was two days without milk. I was very sad for her. I can't do anything, because I don't have any money. Thank you very much, thank you so much, thank you so much." Also a single mother whose 4-year-old son attends Wesley Community Center, where she receives a weekly Wesley grocery sack, said, "I am very grateful for the food the church provides my children. Knowing I am able to have somewhere to go to receive food helps relieve the stress of thinking how and what my family will have to eat." Thank you for your generosity.

### ⇒ Missions Endowment Pandemic Emergency Funding

A portion of funds from the Oliver Mission Endowment will be directed to the physical needs of vulnerable families with children. We are weighing the best short- and longer-term investments.

### ⇒ Transitional Housing for Family Promise

Wesley is taking a lead in renovating transitional housing donated by the Savannah Land Bank to Family Promise. Limited volunteers have been addressing site prep and new roofing. When able, our United Methodist Men and Youth Group will be lending their skills.

### ⇒ United Way Matching Grant

We funded a \$5,000 challenge grant with the United Way that raised \$184,000 to help families affected by the pandemic.

### ⇒ Providing Masks to Area Agencies

We will be distributing face masks to local ministries in need of protection.

### ⇒ Feeding Families Abroad

Through Mission on the Move in Honduras and the Methodist Mission Society serving in Peru, Wesley is funding food distribution to families served by these ministries.

Being a witness for Christ and assisting personal discipleship permeates all we hope to do. As the protocols of our church for social distancing are relaxed and we can again gather as a congregation, there will be opportunities to volunteer and contribute. The effects of this pandemic will be long term. Watch the Wesley website and Messenger for opportunities to be involved. If you have any questions or suggestions contact Rev. Nelle Bordeaux or Scott Cleaveland, Chair.

Roofing has begun on the two transitional Family Promise houses located on Cummings Street.







## Staying Connected While Apart

### Covid-19 and Upcoming Events

Please note, all upcoming events listed in the June Messenger are subject to change. Please check our website, [wesleymonumental.org](http://wesleymonumental.org) and Facebook/Instagram posts for updates. If you are not receiving two emails from Wesley Monumental each week, please contact Jennifer Brookins, 912-232-0191 or [jennifer@wesleymonumental.org](mailto:jennifer@wesleymonumental.org).



### Come Zoom with Us!

Now is a great time to join a Bible Study or Sunday School Class  
Email the contact person listed below for details and Zoom meeting ID

#### Bible Studies:

- ♦ **Tuesday Morning Men's Bible Study, 7:00 am** (Led by Ben Martin, [ben@wesleymonumental.org](mailto:ben@wesleymonumental.org))  
Studies include the passage Ben is preaching from that week.
- ♦ **Tuesday Morning Young Mothers' Bible Study, 9:00 am** (Led by Nelle Bordeaux, [tbordeaux@prodigy.net](mailto:tbordeaux@prodigy.net))  
Currently Studying: "Good News of Great Joy: Angels in the Bible" (5-minute children's puppet show at start every week)
- ♦ **Wednesday Morning Bible Study, 11:00 am** (Led by Ben Martin, [ben@wesleymonumental.org](mailto:ben@wesleymonumental.org))  
Studies include the Lectionary Readings for that week of the Christian Year
- ♦ **Wednesday Evening Bible Study, 8:00 pm** (Led by Jennifer Thompson, [jennifert@wesleymonumental.org](mailto:jennifert@wesleymonumental.org))  
Currently Studying: "Get Your Life Back" by John Eldredge
- ♦ **Wednesday Night Youth Bible Study, 8:00 pm** (Led by James P. Owens, [james@wesleymonumental.org](mailto:james@wesleymonumental.org))  
Currently Studying: "Theodicy - Defense of God in the face of evil and suffering in the world"
- ♦ **Thursday Downtown Bible Study, Noon to 12:30 pm** (Led by Nelle Bordeaux, [tbordeaux@prodigy.net](mailto:tbordeaux@prodigy.net))  
Currently Studying: "The Book of Acts"

#### Sunday School Classes:

- ♦ **Alpha Class** (Contact Evonne Mobley, [evonne.mobley@gmail.com](mailto:evonne.mobley@gmail.com))  
Adult Bible Studies Summer 2020, 10:00 am
- ♦ **Compass Class** (Contact Adam Hess, [adamrhess@gmail.com](mailto:adamrhess@gmail.com)), New Study, 9:30 am
- ♦ **Connect Class** (Contact Jennifer Thompson, [jennifert@wesleymonumental.org](mailto:jennifert@wesleymonumental.org))  
New Class - Everyone Welcome! One Book: The Book of Isaiah (Chapters 1-39), 10:00 am  
If you want a study book, order the above title at [www.seedbed.com](http://www.seedbed.com)
- ♦ **Epworth Class** (Contact Ken Spriggs, [kspriggs@spriggsgroup.com](mailto:kspriggs@spriggsgroup.com))  
Paul's Letter to the Philippians, 10:00 am
- ♦ **Pastor's Class and Journey Class** (Contact Ben Martin, [ben@wesleymonumental.org](mailto:ben@wesleymonumental.org))  
Study on the Book of Judges, 10:00 am



## Congregational Life

Rev. Jennifer Thompson, Congregational Care  
912-232-0191, Ext. 202, [jennifert@wesleymonumental.org](mailto:jennifert@wesleymonumental.org)



If anyone needs food or errands run (or knows who does), there is a group of very wonderful people who have volunteered to do just that! Please take advantage of their kindness. You can contact Jennifer Thompson at [jennifert@wesleymonumental.org](mailto:jennifert@wesleymonumental.org) or call 229-726-7735, and she will get you connected.

### Merry Makers

Merry Makers will make a come back in the fall! All of the wonderful programs we had scheduled for the spring are just on hold and will be re-scheduled. As soon as we are safe to meet in groups (probably August), we will get together for a meal and/or some fellowship just to reconnect. If you have ideas of how we can meet and stay safe, contact Jennifer Thompson.



## Children's Ministry

Charli Weeks, Director of Children's Ministry  
912-232-0191 Ext. 225, [charli@wesleymonumental.org](mailto:charli@wesleymonumental.org)

We miss seeing you in person but love seeing all of the pictures of you and your art projects on Instagram. Be sure to follow us at @CMatWesleyUMC.

We've seen many of you out and about and it is very exciting to be planning for our return to church. We are carefully studying the guidelines for cleaning and sanitizing our facilities that are available from the CDC, the Georgia Department of Public Health, and the Department of Early Care and Learning. Many supplies



have been ordered, checklists have been made, and training sessions are being scheduled for our Nursery and Summer Camp staff and our Children's Worship and Sunday School volunteers.

Some of the things we are planning to protect our children are: small group sizes, cleaning and sanitizing between each service, hard surfaces wiped down frequently, no large group gathering, temperature screening, limited furniture in classrooms, and at this time, we expect our leaders and children will be asked to wear masks. We are planning for the children to come directly to their classrooms on Sunday mornings and not go to the sanctuary. As each room reaches the number of children allowed in that room, we will open the next room. We will need lots of helpers and hope you will be faithful to come when you are scheduled.



### Vacation Bible School

Join us for a week full of smiles, laughter, love, and discovering how "Jesus' Power Pulls Us Through"! Vacation Bible School will be held at the Wesley Gardens Retreat Center June 22-26 from 9:00 a.m. to noon. Registration is now open for all Wesley Monumental families. Register at [myvbs.org/wesleymonumental](http://myvbs.org/wesleymonumental). If you have questions, please contact [charli@wesleymonumental.org](mailto:charli@wesleymonumental.org). This year, due to the Coronavirus guidelines we are limiting enrollment to 120 Wesley children. If you have not already registered, please register today!

It takes a village to shepherd all of our children through the learning centers and activities that are planned for VBS. From making and serving snacks, to helping put welcome packets together, there are tasks for everyone. You can sign up to help at [myvbs.org/wesleymonumental](http://myvbs.org/wesleymonumental) or by emailing [charli@wesleymonumental.org](mailto:charli@wesleymonumental.org).

### Summer Fun Daze at Wesley Gardens



Wesley children who have completed kindergarten through third grade can register now for Summer Fun Daze at Wesley Gardens the week of July 20-24. It will be a fun week full of games, crafts, science, and water fun along with some time spent studying God's word and doing acts of service. Monday - Thursday we'll start at 9:00 a.m. and end at 3:00 p.m., and on Friday we'll start at 9:00 a.m. and hope to end with lunch for our families at noon. The cost for the week is \$85. If you have not received a registration form, please email [charli@wesleymonumental.org](mailto:charli@wesleymonumental.org)

### Eli's Place Summer Camp

Summer Camp at Eli's Place is for children as young as 12 weeks through those who have completed Pre-K and will be starting kindergarten in the fall. It is a great opportunity for children to build friendships with other children who are members of Wesley Monumental. It is also a way to introduce friends and family members to Wesley. Registration forms and more information are available at the church.







## From Ben's Desk

Ben Martin, Senior Pastor  
912-232-0191, Ext. 216, ben@wesleymonumental.org

**"I was glad when they said to me,  
Let us go into the house of the Lord." (Psalm 122)**

The last three months have felt like an episode of the "Twilight Zone." It all seems so surreal: no St. Patrick's Day, Easter, Mother's Day, Graduation. Weddings and funerals postponed. Monday to Saturday seemed more normal for me. I came to the office every day, wrote a sermon every week, prepared for and taught Bible Studies and Sunday School online, but then I'd walk into an empty sanctuary every Sunday morning, and it all hit home. And as much as we wonder "When is this going to be over?" there is no definitive end in sight. But now while the world around us is slowly putting their feet back in the water, it is time for us to start planning for opening our doors again.

Before I talk about that, I do want to say thank you to everyone who has worked so hard to keep us connected while we were apart. All of our staff have been creative and attentive to reach out in countless ways so worship could happen, study went on, children and youth were engaged, and people were cared for. A special shout out to our Church Administrator, Jimmy Flowers, who has worn so many hats during this time, from pulling together the means to video and distribute our worship, establishing online giving, helping Suzanna pull together take-out meals, doing all the legwork to enable us to take advantage of the PPP loan/grant program that helped cushion the financial impact of this event, along with all his normal work with facilities, finances, and personnel. For Jimmy and others on our staff, so much work goes on behind the scenes that you never see, but is so critical to our ministry. And thanks to our Sunday School classes for staying together on "Zoom" and our Young Mothers' Bible study for spearheading an "adopt a grandparent" (for lack of a better title), and reaching out to many of our older adults. Thanks to our Missions Committee for continuing to be attentive to those who are hurting around us, and for the many generous people who have given money to be supportive of those who have lost jobs or income. The list goes on and on of the many ways you have continued to be the church beyond the walls. Our Annual Conference staff has a tag line going right now that says, "Church Can Happen Anywhere," and you have brought that to life.

Now back to our restart plans. Pending the Governor's order being relaxed that prohibits larger group gatherings and another spike in cases, we are making plans to have our first public worship service at Wesley Gardens on Sunday, June 21 at 5:30 p.m. It will be an outdoor service (as will likely all of our Sunday evening services will be this summer due to the small size of the chapel). The following Sunday, June 28, we will begin in-person services in the sanctuary at 8:45 and 11:00 a.m. with the Wesley Gardens 5:30 p.m. being a third offering. We will still be practicing social distancing so there will be a limitation to the number of people in the sanctuary (probably around 125-140), masks will be required, no congregational singing, and the special music will be soloist or very small ensembles. The services will be shorter, around 45 minutes, children will be dropped off for nursery/children's church before the service, and the sanctuary will be sanitized between services. More details will be sent out soon. We hope the number of people will be balanced between the services to accommodate everyone (including Wesley Gardens). We will also be live streaming the morning service for those who are more vulnerable and safer watching at home. We will not restart in-person Sunday School yet, but try to live into our worship services first.

Unfortunately, we will continue to live with some level of threat from the virus, and nothing we do will be completely "normal" if we are to do all we can to eliminate the risk. But we do believe there is great value for us in being together in whatever ways we can, in spite of the limitations. So keep praying and with the Psalmist, sing in your hearts, "I was glad when they said to me, Let us go into the house of the Lord." (Psalm 122)



## Prayer Committee

The Prayer Committee will resume praying in the sanctuary in the fall from 4:45 p.m.— 5:15 p.m. Prayers are to our Lord and for blessings for our church, staff, and congregation.



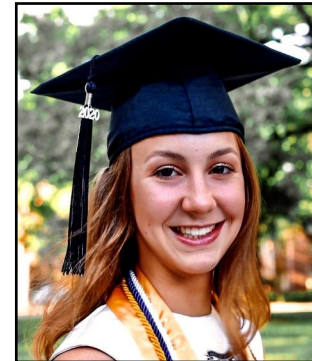
## Youth

James P. Owens, Director of Student Ministries  
912-232-0191 Ext. 209, james@wesleymonumental.org



# CONGRATULATIONS

## High School Graduates



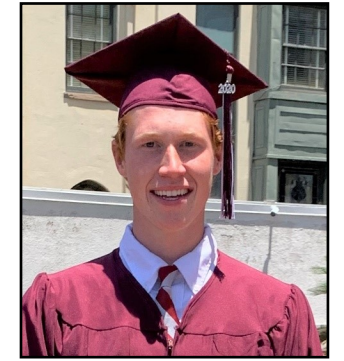
**Kate Conner**  
Savannah Arts Academy



**Brandon Culberson**  
Calvary Day School



**Julia Flowers**  
Savannah Arts Academy



**Tripp Flowers**  
Benedictine Military School



**Eli Haire**  
Savannah Christian Prep



**Taylor Mason**  
St. Vincent's Academy



**Libby Mattocks**  
St. Vincent's Academy



**Clark McKinney**  
Benedictine Military School



**Amelia Pound**  
Savannah Arts Academy



**Savannah Yost**  
St. Vincent's Academy

## College and Graduate/Professional School Graduates:

**Michael Sailors,**  
Savannah State University  
**Kathleen C. Herring, MD,**  
Medical College of Georgia  
**Katy Laws, Doctor of Audiology,**  
Nova Southeastern University  
**Meredith Layman,**  
Savannah Law School  
**Corey Stack, MD,**  
Medical College of Georgia





429 Abercorn Street  
Savannah, Georgia 31401

The Monumental Messenger (USPS 624-500) is published monthly by Wesley Monumental United Methodist Church, 429 Abercorn Street, Savannah, GA 31401-5043. Periodicals Postage Paid at Savannah, GA. POSTMASTER: Send address changes to The Monumental Messenger, Wesley Monumental United Methodist Church, 429 Abercorn Street, Savannah, GA 31401-5043.

June  
2020

Volume 69 Issue 6  
June 7, 2020

wesleymonumental.org

# THE MONUMENTAL MESSENGER

## Life at Wesley



Sweet memories from Palm Sunday and Easter 2020



The Children's Ministry Team has been busy mailing weekly art projects to keep the children engaged.



On May 22, Skip Watts and Sheila Boone hand-delivered perfect attendance awards to 22 children.



Thank you for the donations of nonperishable food items for Wesley Community Centers. We are still accepting donations. Please place in boxes located in the Oliver Hall Lobby.

## Messenger Monthly Spotlight

### Worshipping at Home

Whether it's watching the Sunday sermons on the big or small screen, or while playing with toys or eating breakfast, everyone has worshipped a little differently over these past few months.

